

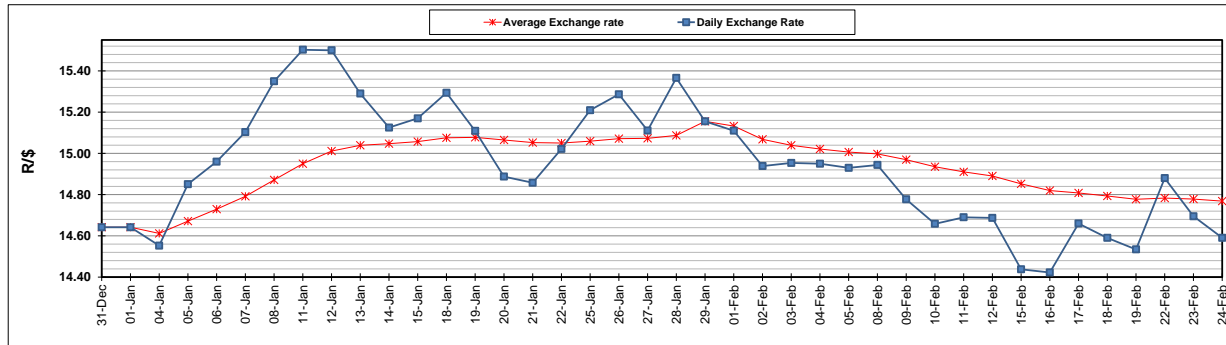
	PETROL 95 ULP	PETROL 93 ULP & LRP	DIESEL 0.05%	DIESEL 0.005%	ILL. PAR.
GAUTENG PUMP PRICE (SA c/l) AS FROM 03/02/2021	1,567.000	1,550.000	-	-	-
WHOLESALE PRICE (SA c/l) AS FROM 03/02/2021	-	-	1,358.420	1,360.820	798.688
SINGLE NATIONAL MAXIMUM RETAIL PRICE	-	-	-	-	1,008.000
BASIC FUEL PRICE - 24/02/2021 (SA c/l)	692.546	682.295	675.880	679.116	652.870
PRESS RELEASE CONTRIBUTION TO BFP 03/02/2021 - 24/02/2021 (SA c/l)	600.170	593.170	599.630	602.030	586.128
UNIT OVER/(UNDER) RECOVERY - 24/02/2021 (SA c/l)	(92.376)	(89.125)	(76.250)	(77.086)	(66.742)
AVERAGE BASIC FUEL PRICE 29/01/2021 - 24/02/2021	650.511	641.412	643.391	647.017	622.849
AVERAGE UNIT OVER/(UNDER) RECOVERY 29/01/2021 - 24/02/2021	(63.131)	(61.031)	(52.919)	(54.303)	(46.036)

### ANALYSIS MOVEMENT OF AVERAGE OVER/(UNDER) RECOVERY

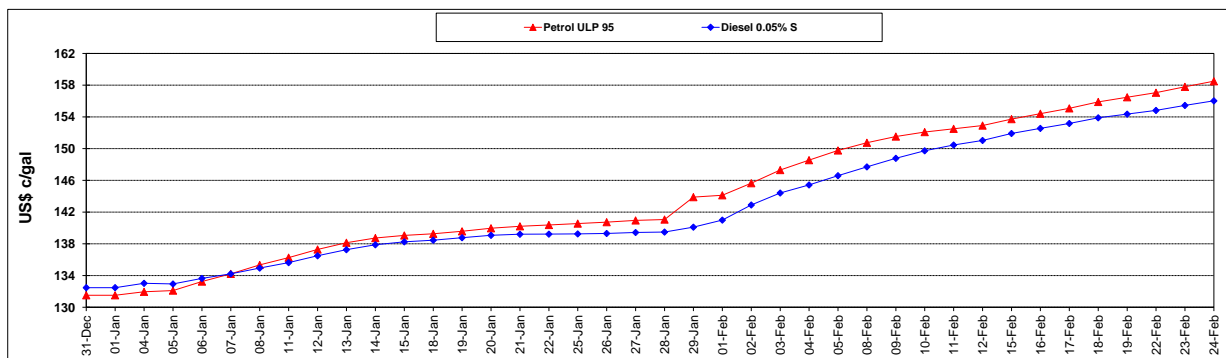
	PETROL 95	PETROL 93	DIESEL 0.05%	DIESEL 0.005%	ILL. PAR.
- MOVEMENT IN INTERNATIONAL PRODUCT PRICES	(77.159)	(74.864)	(66.794)	(68.256)	(59.469)
- MOVEMENT IN EXCHANGE RATE	14.029	13.833	13.875	13.953	13.432
AVERAGE UNIT OVER/(UNDER) RECOVERY 29/01/2021 - 24/02/2021	(63.131)	(61.031)	(52.919)	(54.303)	(46.036)

### R/\$ EXCHANGE RATE - (R/\$14.5905 - 24/02/2021)

#### EXCHANGE RATE USED IN BASIC FUEL PRICE



#### INTERNATIONAL PRODUCT PRICES OF BASKET USED IN BASIC FUEL PRICE



#### BASIC FUEL PRICE IN SA CENTS PER LITRE

